

2022-2023 Academic and Career Planning Information for Rising 6th Graders



Christiansburg Middle School

Student Version

Meet the CMS Administrators

Andrew Hipple, Principal



Brandon Keith, Assistant Principal



Anita Alderman, Assistant Principal



Carol Slonka, Assistant Principal



Travis Murphy, Assistant Principal

WHO WILL HELP ME WITH REGISTERING FOR CLASSES?

These CMS faculty members will help you with registering for classes.



- Kenita Brugh, counselor kbrugh@mcps.org



- Catina Mitchell, counselor catinamitchell@mcps.org

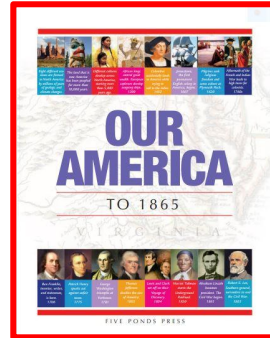
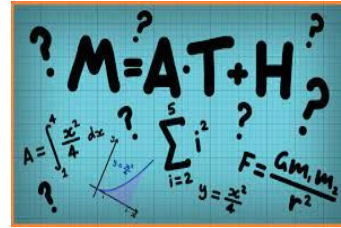
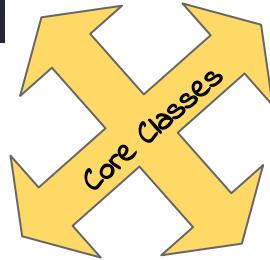
- Natasha Koger, counselor natashakoger@mcps.org



- Lisa Dobbins, Administrative Assistant for Counseling
lisadobbins@mcps.org



REQUIRED SIXTH GRADE COURSES





SIXTH GRADE ELECTIVES

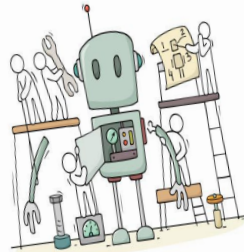


STUDENTS CAN CHOOSE ONE OR

STUDENTS CAN CHOOSE TOP FOUR AND TWO ALTERNATES

Year-Long Elective Choices:

- Beginning Band
- Beginning Chorus
- Art 6



Elective Wheel - Quarterly Rotation:

- Music Exploratory
- Agriscience Exploratory
- Technology Education Exploratory
- Family and Consumer Science Exploratory
- Robotics Exploratory
- Theater Exploratory
- Art Exploratory



MCPS Middle School Program of Study

Montgomery County Public Schools
Middle School
Program of Studies



2021-2022



This guide describes all of the middle school classes. It's a great place to read all of the details for every class offered.

https://www.mcps.org/departments/curriculum_pages/m_c_p_s_middle_school_program_of_studies

STANDARD CMS SIXTH GRADE SCHEDULE

	6th Grade
1	Math
2	English 6
3	U.S. History I
4	Science 6
5	HPE 6
6	Intervention / Enrichment
7	Digital Technology Foundations / Career Investigations
8	Year-long Fine Arts or <u>Exploratory</u> Electives

CMS SIXTH GRADE SCHEDULE w/ INTERVENTION COURSE

	6th Grade
1	Math
2	English 6
3	U.S. History I
4	Science 6
5	Intervention / Enrichment
6	HPE 6
7	Intervention Course
8	Digital Technology Foundations / Career Investigations

The intervention class
will replace the year long
or elective wheel class.



Meet the 6th Grade Teachers

- **Maple Team**

Mrs. Blevins
Ms. Hicks



- **Mimosa Team**

Mrs. Sczcur
Mrs. O'Dell
Mrs. Wade
Mrs. Taylor



- **Sycamore Team**

Mrs. Sharp
Ms. Brehl
Mr. Howard
Mr. Mehfoud



Breakfast and Lunch

- Breakfast is available each morning before first period
- Students may choose a school lunch or bring a lunch from home
- Your lunch code is the same as your student number
- 6th graders eat with other 6th graders



Sports and Clubs

- Fall-



- Cheerleading
- Football
- Volleyball
- Cross Country



- Winter-

- Basketball
- Indoor Track
- Wrestling



- Spring-

- Track & Field
- Baseball
- Softball



- Art Guild
- Boys & Girls Club
- FBLA
- FFA
- Drama Club



Frequently asked questions



What time does school start and end?

8:05 am- 2:50 pm



Do 6th graders use lockers?

Yes



Do 6th graders dress out or change clothes for PE?

Yes

And Remember ...

- Student course requests are used to build a class schedule that best fits your educational needs.
- We will try to give you the classes that you want, but sometimes what you need is more important.
- Once you have submitted your course requests with your family or teacher, we will mail a copy home for your parent or guardian to sign.

District Code

XHCL

Download on the App Store

GET IT ON Google play

Welcome to the Christiansburg Middle School Class Registration System for 2022-2023

Please refer to the [MCPS Middle School Program of Studies](#) to complete course requests below. **When finished registering, remember to click SUBMIT or your requests will not be saved.**

[View course requests](#)

Required 6th Grade Courses

These classes are preselected for all 6th grade students.

Click on the "pencil" in the upper right corner to see course descriptions.

English/Language Arts 6	US History I (to 1865)	Math 6	Science 6	Digital Technology Founda	Health & PE 6	Career Investigations (18 v	Advisory 6
11090 - 0 credits In this course, students	23530 - 0 credits In this course, students will	31100 - 0 credits The standards taught in this	41350 - 0 credits In this integrated science	61600 - 0 credits (Formerly Digital Input	71100 - 0 credits This course is taught	90690 - 0 credits This course allows students	ADV6 - 0 credits The I/E Period is not a class

The school will determine all Math class

placements at a later time. **All 6th grade students will be enrolled in Math 6 as a place-holder until Math class placements are determined.**

Information regarding math placement or placement in one of our remediation and intervention support classes is also available in the Program of Studies (See [Middle School Math Pathways](#)), page 20.

Parents/guardians will be notified regarding placement decisions before the end of the current school year.

Number of requests to generate : 1

Elective OPTION 1: Year-Long Fine Arts Course

[Click the edit button to request a course](#)

If you want to take year-long Band, Choir, or Art, you will select one here.

IF YOU HAVE CHOSEN A YEAR-LONG ELECTIVE IN THIS SECTION, DO NOT SELECT ANY EXPLORATORY ELECTIVES BELOW.

Number of requests to generate : 1

Elective OPTION 2: Exploratory Electives

[Click the edit button to request a course](#)

Please select the 4 Exploratory Electives that most interest you.

IF YOU HAVE CHOSEN A YEAR-LONG ELECTIVE ABOVE, DO NOT SELECT ANY EXPLORATORY ELECTIVES HERE.

Based on student selections, elective courses with the most student interest will become part of the Exploratory Elective Wheel(s) for the school year. All course offerings are dependent upon staff availability and sufficient student interest in the class. Schools often share elective teachers.

therefore, it may not be possible to determine the availability of certain courses until master schedules are finalized in June of each year. Therefore, it is important to select alternative electives.

Number of requests to generate : 1

5th Grade Alternate Exploratory Elective Choice 1 Click the edit button to request a course =>



Please choose an Alternate Exploratory Elective. This selection will be used if the first choice electives are not available. Do NOT choose the same classes you have already chosen in another section.

Number of requests to generate : 1

5th Grade Alternate Exploratory Elective Choice 2 Click the edit button to request a course =>



Please choose an Alternate Exploratory Elective. This selection will be used if the first choice electives are not available. Do NOT choose the same classes you have already chosen in another section.

Number of requests to generate : 1

5th Grade Alternate Exploratory Elective Choice 3 Click the edit button to request a course =>



Please choose an Alternate Exploratory Elective. This selection will be used if the first choice electives are not available. Do NOT choose the same classes you have already chosen in another section.

Number of requests to generate : 1

Additional Requests Click the edit button to request a course =>



Requests that are currently not associated with any requirement group.

Requires at least 0 credit hours.
Requesting 0 credit hours.
Requesting 0 additional credit hours.



What happens next?



- In April: All 5th graders will travel to CMS for a visit
- After July 15th: Schedules will be mailed home to families
- In August: students and families will attend an open house



We are looking forward to having you at CMS!!

